

# Pass Through Picnic Table



## Assembly Guide

**NBB**   
**Recycled  
Furniture**

**NBB**   
**Outdoor  
Shelters**

**NBB**   
**Premises  
& Matting**

**NBB**   
**School  
Shelters**

## Variations of different bench designs are assembled the same way



Bench with Arm and back rest



Bench with back rests



Backless Bench

## Parts and Fittings

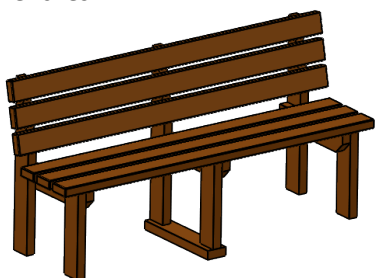
Table



x1

**TWO PEOPLE REQUIRED  
FOR SAFE ASSEMBLY**

End Benches



x2

Joining slat



x2

## Fittings



x12

60mm



x12

Tools supplied



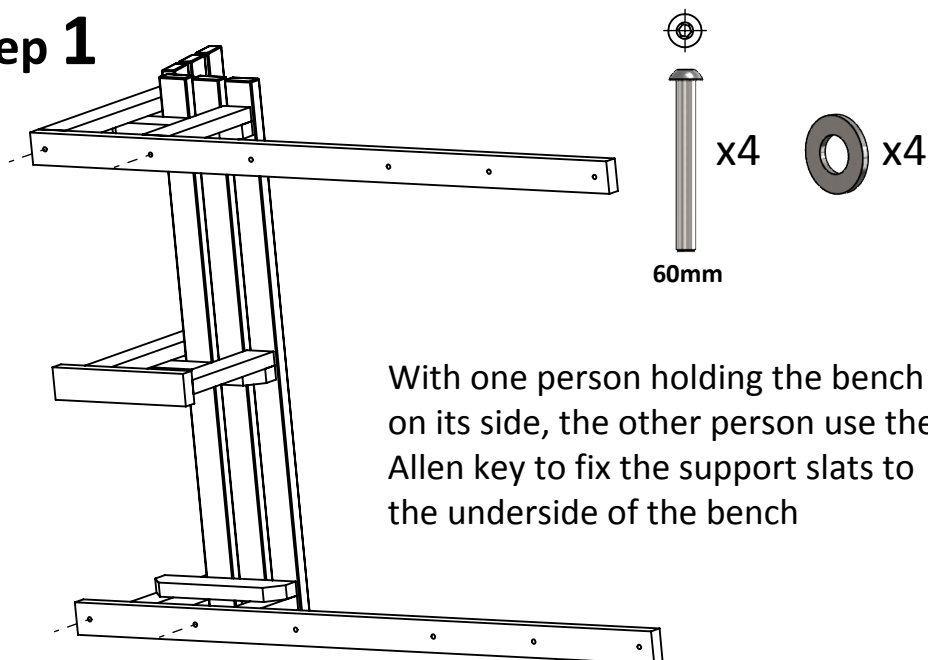
17mm Spanner

x1

6mm Allen Key

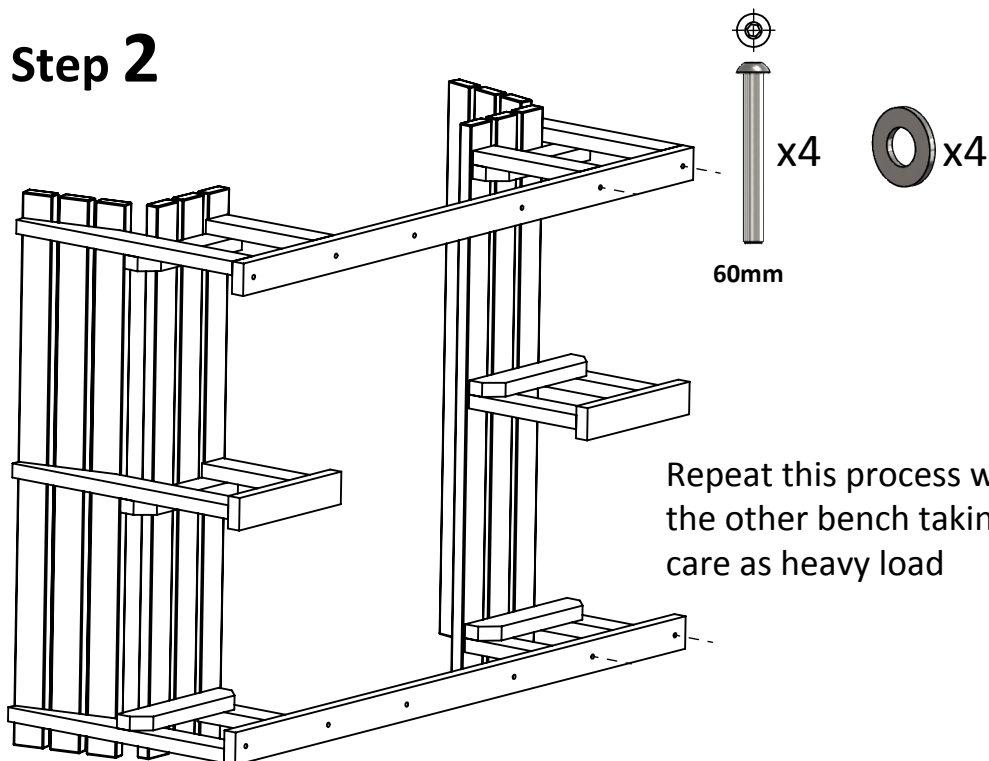
x1

## Step 1



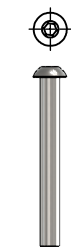
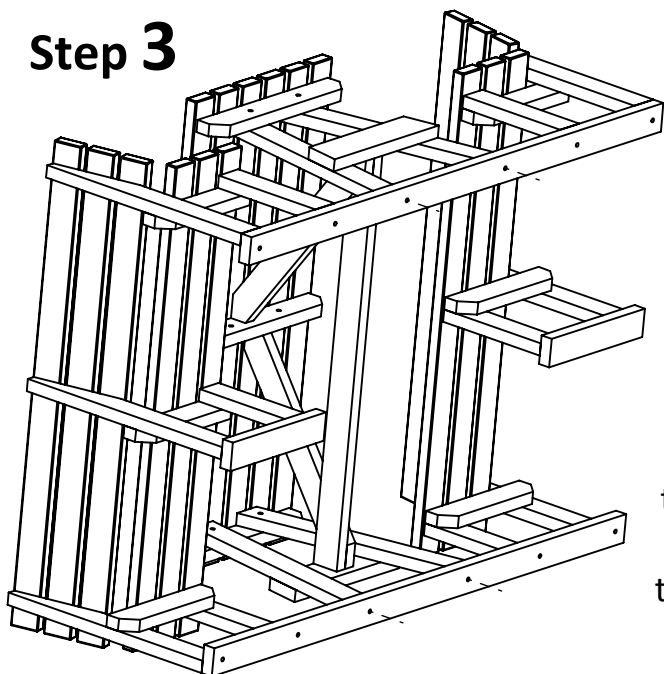
With one person holding the bench on its side, the other person use the Allen key to fix the support slats to the underside of the bench

## Step 2



Repeat this process with the other bench taking care as heavy load

## Step 3

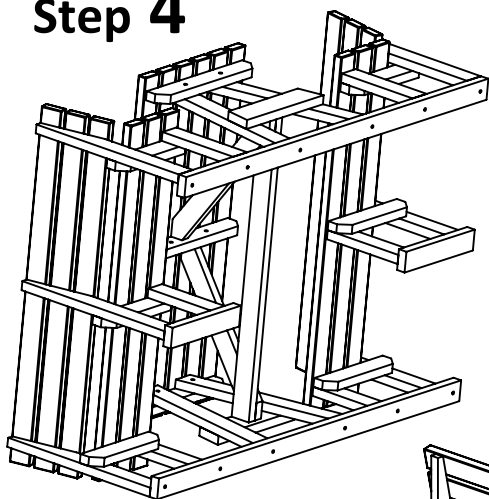


x4

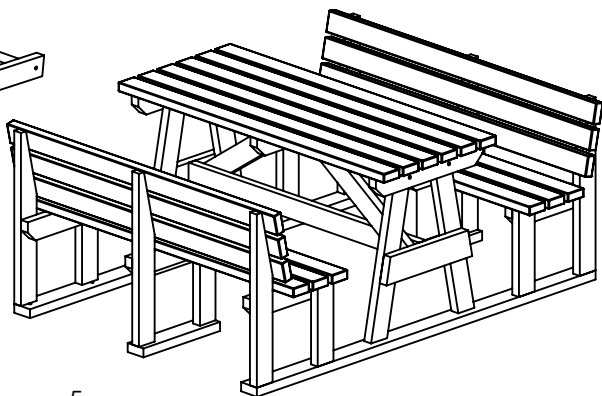


With one person holding the benches on their sides, the other tilts the table into position lining up the holes. Bolt the table to the assembly.

## Step 4



Carefully lower it down minding feet



**Notes:**

**Notes:**

# THANK YOU FOR PURCHASING THIS PRODUCT

## CONTACT DETAILS:

Email : [sales@recycledfurniture.co.uk](mailto:sales@recycledfurniture.co.uk)

Web : [www.recycledfurniture.co.uk](http://www.recycledfurniture.co.uk)

Tel : 0800 1777 052

NBB Recycled Furniture, Unit 5, 145 Sterte Road, Poole, Dorset BH15 2AF

<b>All Parts and Fixings checked by:</b>	
Print Name:	Signature